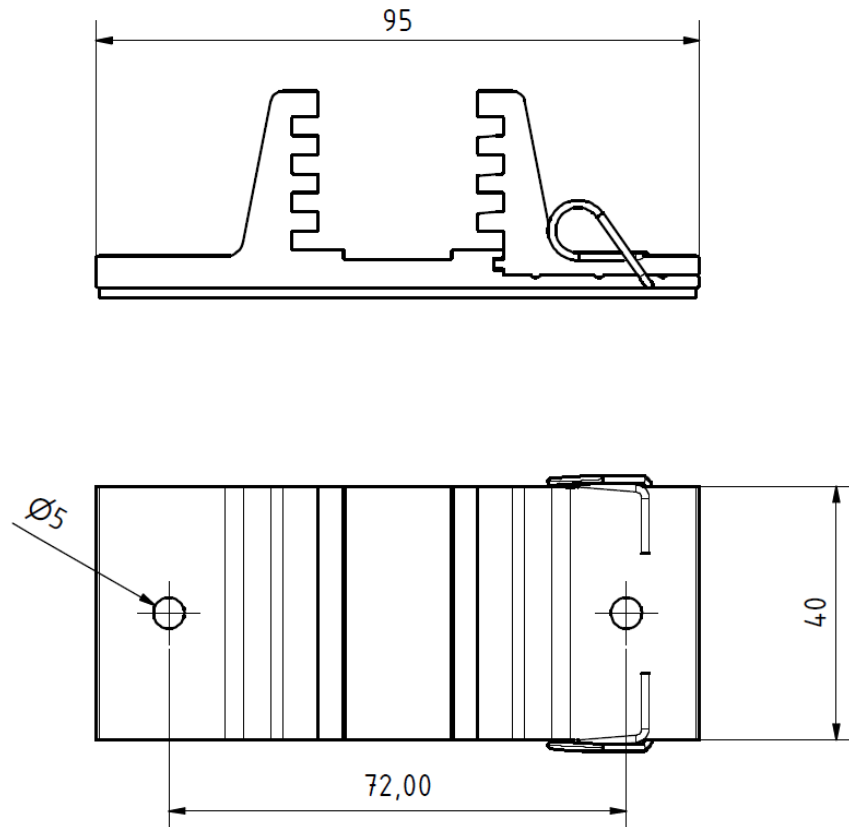


# Technical data sheet

## Trapezoidal Sheet Metal Clamp

Updated: 02.05.2016



Parameter	Values
Material	aluminium, stainless steel, EPDM
Area of application	trapezoidal sheet metal of steel or aluminium with material thickness of 0.5 – 1.5 mm by blind rivet 4.8x15 or self-drilling-screw 5.5x25 approved width of the raised bead: 15 - 40 mm

Subject to errors and modifications.